



Principal: Mrs L Brennan

Dear Parents/Carers,

## PARENTS GUIDANCE ON THE FULL REOPENING OF KINGSMOOR ACADEMY – FROM THURSDAY 3<sup>RD</sup> SEPTEMBER 2020

I hope you are all keeping safe and are looking forward as we are to all your children returning to Kingsmoor Academy in September.

This letter outlines all of the key changes and information you will need to know for you and your child when school reopens in September.

### Summary:

- Children will return to school **full time** and in normal class sizes.
- Children will return to school wearing full school uniform and PE kit.
- Year groups will join together to make larger bubbles:
- EYFS bubble → Nursery and Reception
- Key stage 1 bubble → Year 1 and Year 2
- Lower key stage 2 bubble → Year 3 and Year 4
- Upper key stage 2 bubble → Year 5 and Year 6
- Gates will be allocated for entry and exit to the school – please see table below.
- There will not be a breakfast club or after school clubs provided by the school until further notice.
- Playtimes and lunch times will be staggered.
- Classrooms will be organised following government guidance and legislation.
- The one-way systems will remain in place and continue around the whole school.
- Hand washing with soap and water will take place regularly throughout the day and hand sanitiser units are available around the whole school for children to use as well.
- We will continue to have an onsite cleaner throughout the day to clean all touch surfaces and toilets regularly.
- Reading books will be sent home but when returned to school will be quarantined for 72 hours before being used again.
- Parents are not allowed to enter the classrooms at any point during the day.
- Communication with school staff should take place via the school office, telephone call or email.
- If your child is showing symptoms of Covid-19 before school, please take them for a test as soon as possible and phone the school office to inform them. Please notify the school of the test results.
- If a child from a bubble does test positive for Covid-19, the school will inform all parents of that bubble and they will need to self-isolate at home for either 7 or 14 days depending on the guidance at the time for different circumstances.
- If a child becomes unwell at school, they will be taken to an isolation room and will be looked after by a staff member ensuring they are calm and cared for until parents/carers collect the child. The staff member will be wearing full PPE.

### Bubbles:

- The school will be organised into 4 bubbles:
  - EYFS bubble → Nursery and Reception
  - Key stage 1 bubble → Year 1 and Year 2
  - Lower key stage 2 bubble → Year 3 and Year 4
  - Upper key stage 2 bubble → Year 5 and Year 6



*If you believe it, you can achieve it!*



Principal: Mrs L Brennan

- The classes will be distanced from each other as much as possible in these bubbles. Every class will have their own box of playground equipment. The classes will have their own zones marked out in the playground to use at break and lunchtime.

### Gate allocations:

- To avoid congestion of parents and children at one entry point, we have allocated 3 different gates for children to enter and exit the school from. These must be **strictly adhered** to in order to ensure everybody's safety.
- If you have more than one child in the school please choose the entry point of your youngest child and all should enter and exit through that gate.

ALLOCATED GATE	YEAR GROUP
Gate 1	Nursery
Gate 2	Years 3, 4, 5 and 6
Gate 3	Years 1, 2 and Reception

### Break time and lunchtimes:

- Following a school review of available space and appropriate distancing between different bubbles, a rota system for morning break and lunch times has been established.
- Snacks from home will not be allowed at the beginning of term
- Hands will be washed before snacks and after breaks.
- Hands will be washed before and after lunch.
- Thorough surface cleaning will take place in between lunch sittings.
- Gloves will be worn by all adults in the lunch hall.
- Children will not leave the hall until all of the class have finished eating.

Class	Playtime	Lunchtime	Outdoor break
Nursery	Part of outdoor continuous provision	11.45 – 12.15 in class	12.15 – 12.45 in EYFS outdoor learning space
Reception	Part of outdoor continuous provision	11.30 – 12.00 in small hall	12.00 – 12.30 in EYFS outdoor learning space
Year 1	10.30 – 10.45 Playground zoned areas	11.45 – 12.15 in big hall	12.15 – 12.45 in zoned area
Year 2	10.30 – 10.45 Playground zoned areas	12.00 – 12.30 in small hall	12.30 – 1.00 in zoned area
Year 3	10.45 – 11.00 Playground zoned areas	12.15 – 12.45 in big hall	12.45 – 1.15 in zoned area
Year 4	10.45 – 11.00 Playground zoned areas	12.30 – 1.00 in small hall	12.00 – 12.30 in zoned area
Year 5	11.00 – 11.15 Playground zoned areas	12.45 – 1.15 in big hall	12.15 – 12.45 in zoned area
Year 6	11.00 – 11.15 Playground zoned areas	1.00 – 1.30 in small hall	12.30 – 1.00 in zoned area
All	In dry weather, field should also be used – zoned and with a rota of different year groups	TAs to bring their class into the hall and stay with them whilst they are eating their lunch.	TAs to play structured games in zoned areas with their class.  Class teachers to collect their classes at the end of lunch.



If you believe it, you can achieve it!



Principal: Mrs L Brennan

## Change of clothes:

- School uniform must be worn by all children.
- On PE days, children will attend school wearing their PE kit from home and keep this on for the whole day.
- Please ensure the **Kingsmoor school PE kit** is worn on these days.

## Classroom layout and equipment:

- Apart from Early years classrooms, all children will be allocated with a table and chair to sit at during learning time and this will remain theirs – they should not change seats.
- There will be 2 children sat at a table, side by side.
- Tables will be arranged in rows, facing forwards.
- All paper exercise books will be used as normal.
- Any shared equipment will be cleaned after use.

## Reception and nursery:

- The classroom design and provision of activities and learning should not inhibit the full teaching of the EYFS curriculum.
- Social distancing is not expected between children.
- Working at group tables for children as is normal practice is allowed.
- Free flow to outside area.
- No group sand play until further guidance, however children can have an individual sand trays to play with.
- Water play is allowed with soap or detergent mixed in.
- Activities spaced out as much as possible.
- Children will have their own allocated spots on the carpet area to attempt some distancing.
- Staff to keep 1m+ from children as much as possible.
- Side by side support for children.
- All resources will be washed at the end of each session.

Yours Sincerely,

Lesley Brennan  
Principal

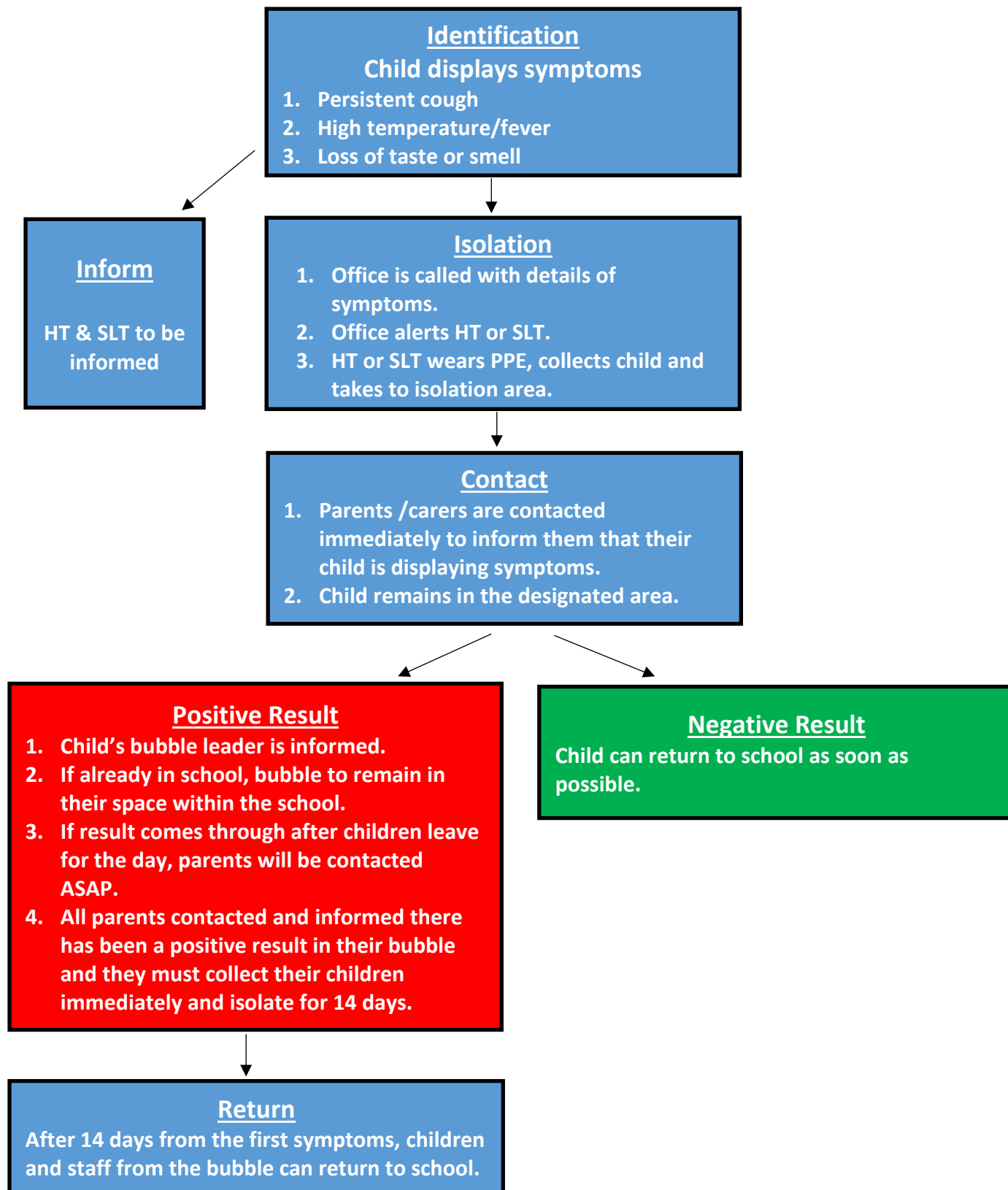


*If you believe it, you can achieve it!*



Principal: Mrs L Brennan

## Process following identification of a suspected case of Covid-19 relating to a child attending school



If you believe it, you can achieve it!